

Oak trees host the largest number of caterpillar species: (Source: Doug Tallamy)

#### Woody Plants

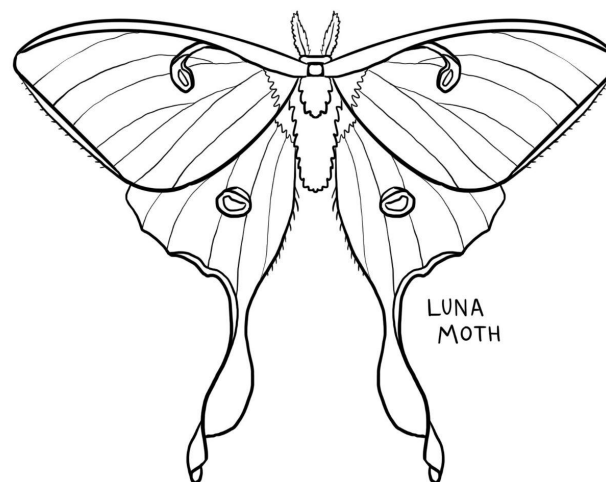
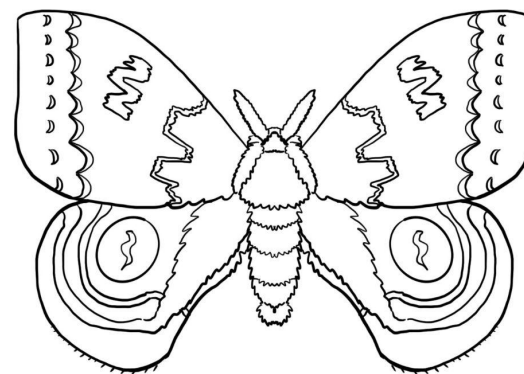
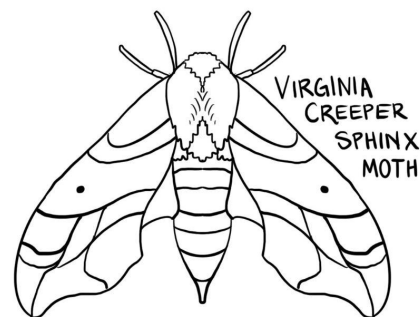
Common Name	Plant Genus	Butterfly/moth species supported
Oak	Quercus	534
Black cherry	Prunus	456
Willow	Salix	455
Birch	Betula	413
Poplar	Populus	368
Crabapple	Malus	311
Blueberry	Vaccinium	288
Maple	Acer	285
Elm	Ulmus	213
Pine	Pinus	203
Hickory	Carya	200
Hawthorn	Crataegus	159
Spruce	Picea	156
Alder	Alnus	156
Basswood	Tilia	150
Ash	Fraxinus	150
Rose	Rosa	139
Filbert	Corylus	131
Walnut	Juglans	130
Beech	Fagus	126
Chestnut	Castanea	125

#### Herbaceous Plants

Common Name	Plant Genus	Butterfly/moth species supported
Goldenrod	Solidago	115
Asters	Aster	112
Sunflower	Helianthus	73
Joe pye, Boneset	Eupatorium	42
Morning glory	Ipomoea	39
Sedges	Carex	36
Honeysuckle	Lonicera	36
Lupine	Lupinus	33
Violets	Viola	29
Geraniums	Geranium	23
Black-eyed susan	Rudbeckia	17
Iris	Iris	17
Evening primrose	Oenothera	16
Milkweed	Asclepias	12
Verbena	Verbena	11
Beardtongue	Penstemon	8
Phlox	Phlox	8
Bee balm	Monarda	7
Veronica	Veronica	6
Little bluestem	Schizachyrium	6
Cardinal flower	Lobelia	4

Plant natives -

The whole ecosystem will thank you!



# Host Plants - How Native Plants Support Wildlife

Produced by FOLAR (Friends of Lower Appomattox River)

Folar-va.org

contactus@folar-va.org

# Io Moth

Host plants:

Many native trees including;

- Oak
- Willow
- Hackberry
- Wild cherry

The spines on the caterpillar are a protective adaptation- watch out! They can sting. Some birds have adaptations to be immune to the stinging chemicals on caterpillars like these.



# Karner Blue Butterfly (Endangered)

Host plants:

-Wild Lupine (*Lupinus Perennis*)

Just the one plant!



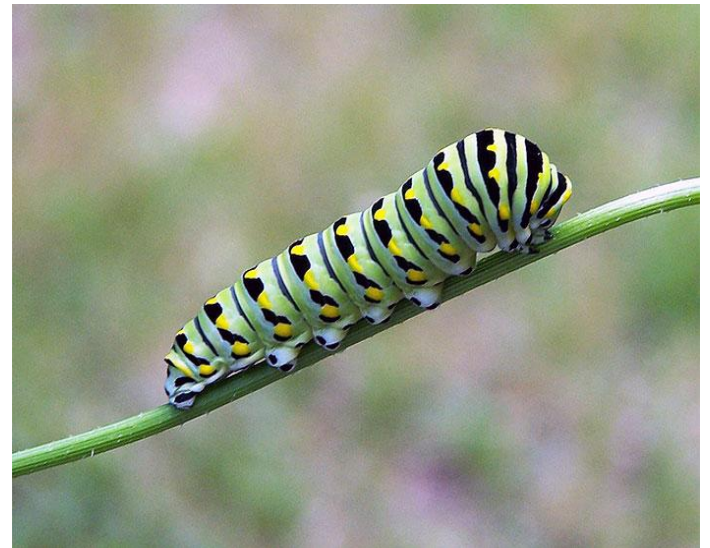


# Luna Moth

Host plants:

Many native trees including;

- White birch
- Black walnut
- Butternut
- Hickory
- Persimmon
- Sweetgum
- Wild cherry



# Black Swallowtail Butterfly

Host plants:

Those closely related to carrots, including;

- Fennel
- Dill
- Rue
- Queen Anne's Lace
- And of course, Carrots!





# VA Creeper Sphinx Moth

Host plants:

- Virginia Creeper
- Viburnum
- Grapevine
- Peppervine

Virginia Creeper shown below:



# Zebra Swallowtail Butterfly

Host plants:

- Pawpaw tree (*Asimina Triloba*)

Just the one! Pawpaws are our largest native fruit, growing naturally in moist lowlands





# Monarch Butterfly

(Endangered)

Host plants:

- Any plant in the Milkweed family (Asclepias)

Common Milkweed shown below:

